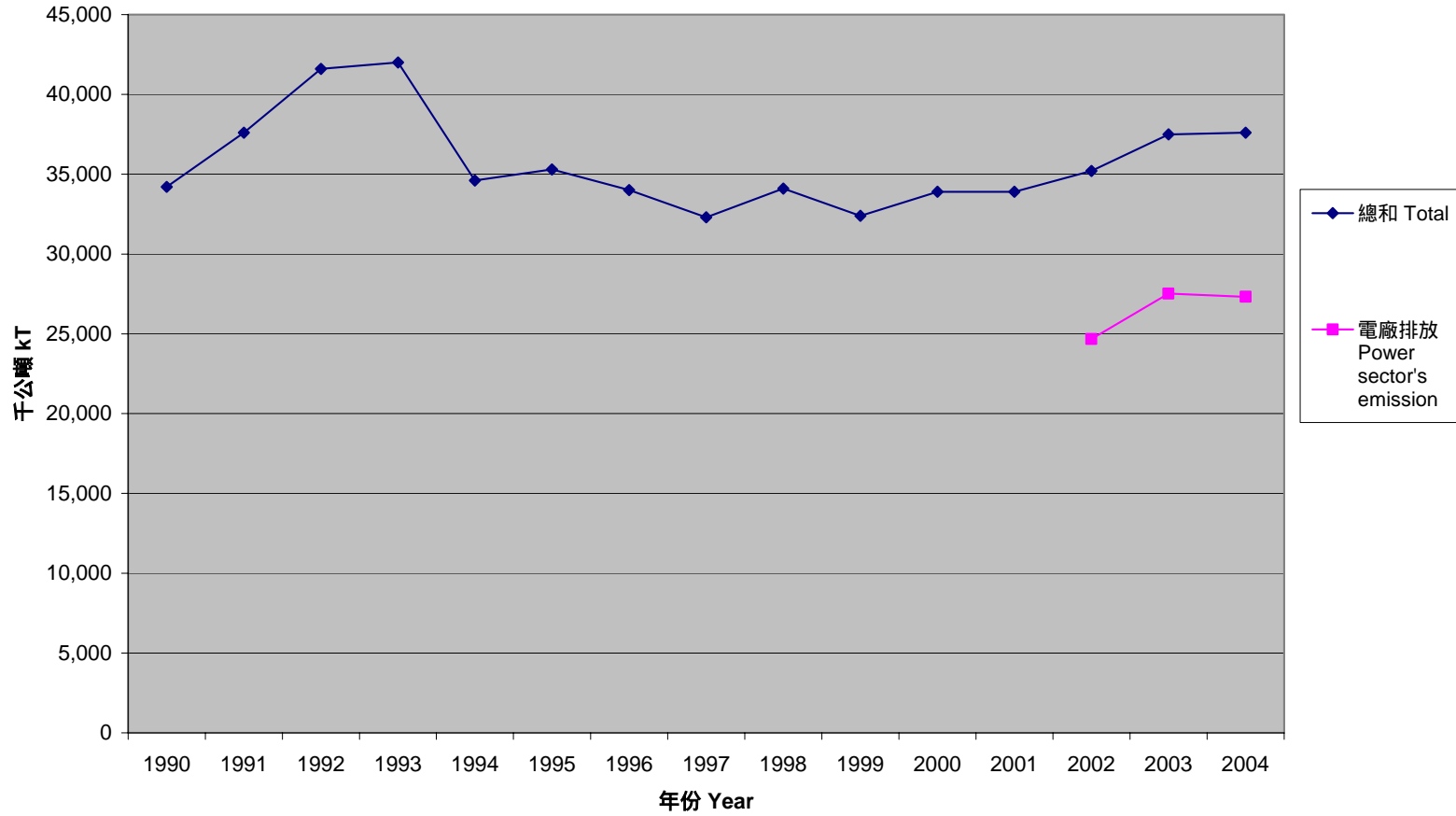




附件二 Appendix 2

香港二氧化碳排放趨勢 Trend of carbon dioxide emission in Hong Kong



二氧化碳排放趨勢 Trend of carbon dioxide emission in Hong Kong

| 年份 Year | 總和(千公噸) (註 1) Total (kT) (Note 1) | 電廠排放(千公噸) Power sector's emission (kT) (Note 2) | 電廠排放比例 Power sector's share |
|---------|-----------------------------------|---|-----------------------------|
| 1990 | 34,200 | | |
| 1991 | 37,600 | | |

| | | | |
|------|--------|--------|-------|
| 1992 | 41,600 | | |
| 1993 | 42,000 | | |
| 1994 | 34,600 | | |
| 1995 | 35,300 | | |
| 1996 | 34,000 | | |
| 1997 | 32,300 | | |
| 1998 | 34,100 | | |
| 1999 | 32,400 | | |
| 2000 | 33,900 | | |
| 2001 | 33,900 | | |
| 2002 | 35,200 | 24,673 | 70.1% |
| 2003 | 37,500 | 27,518 | 73.4% |
| 2004 | 37,600 | 27,314 | 72.6% |

(註: 1. 《香港溫室氣體排放清單》, 香港環保署 . 2005 年 (Hong Kong Greenhouse Gas Emission Inventory, HKSAR Environmental Protection Department, 2005). http://www.epd.gov.hk/epd/tc_chi/environmentinhk/air/data/files/table_ghg_wtc.pdf)

(註: 2. 《環境、品質、健康及安全報告》, 香港電燈有限公司 . 2004 及 2005 年. (Environment, Quality, Health and Safety Report, Hongkong Electric Company, 2005 and 2005)

http://www.heh.com/hehWeb/EnvironmentQualityHealthAndSafety/EnvironmentQualityHealthSafetyReport/Index_zh.htm) ; 《社會及環境報告》, 中電集團 . 2002 至 2005 年. (Social and Environmental Report, CLP Group, 2002-2005) <http://www.clpgroup.com/>)